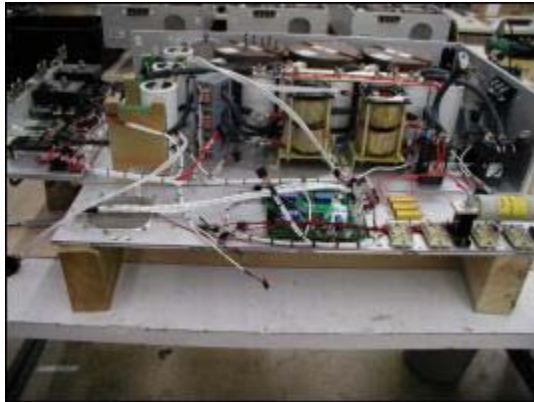


**Power Converter Module 2 (PCM-2) and Ship Service Inverter Module (SSIM)
DC/AC Inverter**

The PCM-2 converts 800VDC to 3-phase 450VAC as part of the Integrated Fight-Through Power System. The PCM-2 consists of several 90kW Ship Service Inverter Modules (SSIMs) that are connected in parallel and are designed to share the total PCM load, up to several megawatts.



90 kW Ship Service Converter Module



PCM-2 Cabinet

**90 kW Integrated Power System
Module Specification**

Power (kW)	90kW/Module (112kW DDX)
Input	725-925 VDC
Output	440-450 VAC 3 Ph, 60 Hz
Efficiency @ rating	95.7%
Line Voltage UnBa	0.3%
THD Distortion @ 5 th	1.2%, out to n=50 0.8%
Power Quality	MIL-STD-1399
Shock & Vib **	MIL-S-901D, MIL-STD-167
EMI/EMC **	MIL-STD-461E